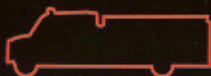
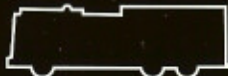


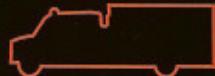
PUMPERS



RESCUE-PUMPERS



TANKERS



- Aluminum formed body  
- Aluminum - 3/16" 5052 sheet with aluminum sub-frame
- Full-height compartments on both sides
- Standard swirl finish aluminum pump house with stainless steel panels
- Full right side hinged access panel on pump house for superior maintenance and service access
- Full-finish interior on compartments with Zolatone® paint
- 15 step PPG paint on body with durable, high luster finish

- VMUX solid state electronics for maximum programmable flexibility with strong system reliability
- Tank capacities up to 1000 gal in a UV stabilized polypropylene tank
- Industry first independent UL welder certification
- Body durability tested by American LaFrance at independent proving grounds
- Standard - Internal ladder and hard suction storage with low hosebed height



BY AMERICAN LAFRANCE

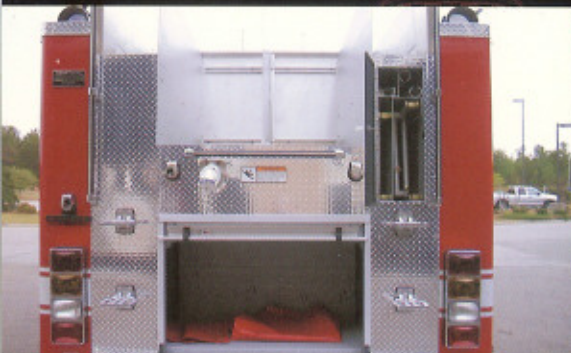
# LIBERTY™ RESCUE PUMPER

CUSTOM AND COMMERCIAL

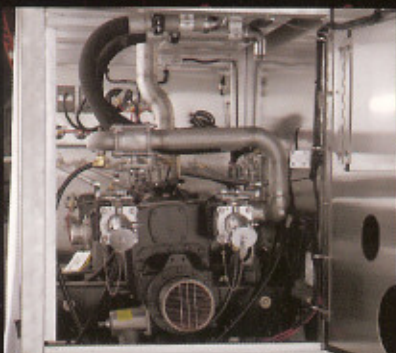


# LIBERTY™ RESCUE PUMPER

## CUSTOM AND COMMERCIAL



Rear view with low hosebed



Full access to pump house



Full height right side compartments

These are the typical specifications for the Liberty™ Rescue-Pumper by American LaFrance:

**MODEL:** Liberty Rescue-Pumper by American LaFrance.

**CHASSIS:** American LaFrance Custom, International, or Freightliner.

**CONSTRUCTION:**

Aluminum: 5052-H32 3/16" formed body panels with integral 6063-T52 sub-frame.

**MOUNT SYSTEM:** American LaFrance proprietary Flexible Mount System™ (FMS).

**BODY STYLES:** Three full-height compartments left and right with low hosebed at rear.

**WATER CAPACITY:** 500, 750 or 1000 gal polypropylene tanks.

**PUMP HOUSE:** Traditional aluminum pump house and overlap panel in side-mount and top-mount configurations.

**PUMPS:** Hale QFLO+ split-shaft 1250 GPM pump standard. Hale QMAX 1500 GPM pump optional.

**FOAM SYSTEMS:** Hale single or dual tank Class A or Class A/B direct injection system with integral foam cell optional.

**DOORS:** Roll-up doors standard. Hinged overlap doors optional.

**LADDER/HARD HOSE/BACKBOARD STORAGE:** Integrated ladder tunnel on right side with hard suction tunnel storage on left (optional conversion to backboard storage). Full depth compartments optional.

**GENERATORS:** 8 KW PTO-driven hydraulic generator (Liberty custom chassis), or compartment-mounted gasoline generators with capacities up to 5 KW (optional – either chassis).

**LIGHTING:** Body-mounted telescoping lights optional.



BY AMERICAN LAFRANCE

For your nearest American LaFrance dealer, go to [www.americanlafrance.com](http://www.americanlafrance.com).

Some specifications and features shown or mentioned in this brochure are optional and are available upon request at extra cost. Specifications are subject to change without notice. ©2009, American LaFrance, LLC. All rights reserved.